

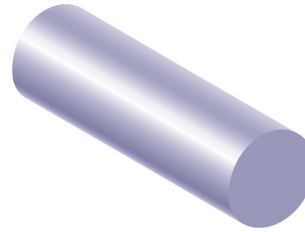
Stainless Steel

Table of commonly available grades

NEW EUROPEAN STANDARD EN10088-3	CURRENT BRITISH STANDARD BS970 PTS 1 + 3 1991	OLD BRITISH STANDARD BS970 PT 4 1970	OLD BRITISH STANDARD BS970 1955
1.4305	303S31	303S21	EN58AM
1.4307	304S11	304S12	EN58E
1.4301	304S31	304S15	EN58A/E
1.4842	310S31	310S24	-
1.4404	316S11	316S12	EN58J
1.4401	316S31	316S16	EN58J
1.4571	320S31	320S17	EN58J
1.4541	321S31	321S12/S20	EN58B
-	325S31	325S21	EN58BM
1.4550	347S31	347S17	EN58F/G
1.4006	410S21	410S21	EN56A
1.4005	416S21	416S21	EN56AM
1.4021	420S29	420S29	EN56B
1.4028	420S37	420S37	EN56C
1.4028	N/A	420S45	EN56D
1.4057	431S29	431S29	EN57
1.4112	AISI 440B	-	-
1.4125	AISI 440C	-	-
1.4542	17/4PH (TYPE 630)	-	-
-	FV520B	-	-
1.4462	DUPLEX UNS31803	318S13	-

NOTES

Other less common grades are available – please ask.



Stainless Steel Round Bar

SPECIFICATION & WESSEX COLOUR CODE

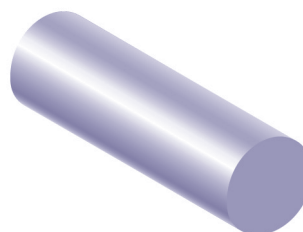
SIZE		YELLOW	GREEN	RED	RED + YELLOW	BLUE + YELLOW	RED + PURPLE	WHITE	BROWN	ORANGE + WHITE	GREEN + ORANGE
INCH	MM	303	304	316	321	416	431	17/4	FV 520B	DUPLEX 31803	440C
1/16	1	7	7	7	7	7					
	2	7	7	7		7					
3/32		7	7	7	7	7					
	2.5	7	7	1		7					
	3	1	2	1	7	7	7				
1/8		1	2	1	7	7	7				
5/32		7	7	7	7	7	7				
	4	1	1	1	7	2	7				
3/16		1	2	1	2	2	7				
	5	1	1	1	2	2	7				
7/32		2	7	2	7	7	7				
	6	1	1	1	2	2	2				
1/4		1	1	1	2	1	1	7			2
	7	1	2	2	7	7	7				
5/16		1	1	1	2	2	2	7			2
	8	1	1	1	2	2	1			1	2
	9	1	2	2		7	7				
3/8		1	1	1	2	1	1	7			2
	10	1	1	1	2	2	1	7			
	11	2	2	2		7	7				
7/16		1	1	1	2	2	2	7			
	12	1	1	1	2	2	1	7			2
1/2		1	1	1	2	1	1	2	2	2	2
	13	2	2	2		2	2				
	14	2	2	2	7	7	7				
9/16		1	2	1	7	2	2		2		2
	15	1	1	1	7	2	2				
5/8		1	2	1	2	2	1	2	2	2	2
	16	1	1	1	7	2	1				
11/16		2	2	2	7	2	2				
	18	2	2	2	7	2	2				
3/4		1	1	1	2	1	1	2	2	2	2
	20	1	1	1	2	2	2				
	22	2	2	1	7	2	2				
7/8		1	1	1	2	2	1	2	2	2	2
	24	2	2	1	7	2	2				
	25	1	1	1	2	2	2			2	
1"		1	1	1	2	1	1	1	2	1	2
	26	2	2	2		7	7				
1 1/8		1	2	1	2	1	1	2		2	2
	30	1	2	1	7	2	2				
1 1/4		1	1	1	2	1	2	1	2	1	2
	32	2	2	2		2	7				
1 3/8		1	1	1	2	2	2	2	1	2	2
	35	1	2	1	7	2	2				
1 1/2		1	1	1	2	1	1	1	2	1	2
	40	1	1	1	7	2	2			2	
1 5/8		1	1	1	7	2	2	2		2	7

KEY

- 1 Normally in stock in Wimborne
- 2 Ex-Sheffield warehouse 2/3 days
- 7 Normally available in 7 days

Uncoded items may be available subject to manufacturing quantities and extended lead times.

Continued ►



Stainless Steel Round Bar

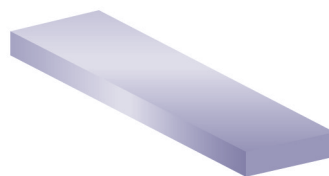
SPECIFICATION & WESSEX COLOUR CODE

SIZE		YELLOW	GREEN	RED	RED + YELLOW	BLUE + YELLOW	RED + PURPLE	WHITE	BROWN	ORANGE + WHITE	GREEN + ORANGE
INCH	MM	303	304	316	321	416	431	17/4	FV 520B	DUPLEX 31803	440C
1 3/4		1	1	1	2	1	1	1	2	1	2
1 7/8			2	2	2	7	2	1	2		2
	50	1	1	1	7	2	2			2	2
2"		1	1	1	2	1	1	1	2	1	2
2 1/8		1	2	1	7	2	2	2			
2 1/4		1	1	1	1	2	1	1	1	2	2
	60	1	1	1	7	2	2				
2 3/8		1	1	1	7	1	1	1		2	2
2 1/2		1	1	1	2	2	1	1	7	2	2
	65	7	2	2		7	7				
2 5/8		1	2	1		7	2				
2 3/4		1	1	1	2	1	2	1	2	2	2
	70	2	2	2				1			
2 7/8		2	2	1		7	2				
3"		1	1	1	1	1	1	1	2	2	2
	80	7	2	2		7	7	7		7	7
3 1/4		1	2	1	7	1	1	1	2	2	2
3 1/2		1	1	1	2	1	2	1	2	2	2
	90	7	2	2							
3 3/4		1	1	1	7	2	2	2	7	2	2
4"		1	1	1	1	2	2	1	2	2	2
4 1/4		1	2	1	1	2	2	2	7	2	2
4 1/2		1	1	1	2	2	2	2	2	2	2
4 3/4		2	2	1	7	2	2	2	7	7	2
5"		1	1	1	2	2	2	2	2	2	2
5 1/4		2	2	1	7		7				
5 1/2		1	1	1	2	7	7	2	2	2	2
5 3/4		7	2	1							
6"		1	1	1	2	2	2	2	2	2	2
6 1/4		7	2	1	7	7	7				
6 1/2		1	1	1	2	7	2	2	2	2	2
7"		1	1	1	2	7	2	2	2	2	2
7 1/4			7	7							
7 1/2		1	1	1	2		2	2		2	2
8		2	1	1	2		2	2	2	2	2
8 1/2		1	1	1	2		2	2		2	2
9"			2	1	2		2	2	2	7	2
	232		1								
9 1/2			1	1	2		2	2		7	2
10"			1	1	2		2	2	2	7	2
10 1/2			2	2			2				
11"			2	2			2	2	2		2
12"			2	2	2		2	2		7	2
13 1/4			2	2	7						
14"			2	2							
	370			1							
16"			2	2							

KEY

- 1 Normally in stock in Wimborne
- 2 Ex-Sheffield warehouse 2/3 days
- 7 Normally available in 7 days

Uncoded items may be available subject to manufacturing quantities and extended lead times.



Stainless Steel Metric Flat Bar

SPECIFICATION TYPES 304 + 316 (LIMITED RANGE OF TYPE 321 AVAILABLE)

WIDTH (MM)	THICKNESS (MM)										
	3	5	6	8	10	12	15	16	20	25	40
10	2										
12	1	2	2		2						
15	2	2	2		2						
20	1	1	1	1	2	2		2			
25	1	1	1	2	1	1	2	2	2		
30	1	1	1	2	1	1	2	2	2	7	
40	1	1	1	2	1	1	2	2	1	1	
45		2	2	2	2						
50	2	1	1	2	1	1	1	2	1	1	7
60	1	2	2	2	1	2			7		
65	2	2	2	2	1	2	2	2	2	2	
75	2	2	1	2	1	2	2	2	1	1	7
80	7	2	2	2	2	2	7	7	7		
100	2	2	1	7	1	1	2	7	1	2	1
125			2		2	2					
150			2		2	2					
200			7		7	7					
250			7		7						

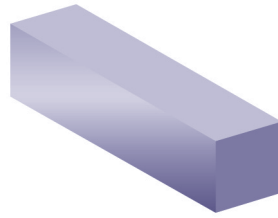
KEY

- 1** Normally in stock in Wimborne
- 2** Ex-Sheffield warehouse 2/3 days
- 7** Normally available in 7 days

NOTES

Uncoded items may be available subject to manufacturing quantities and extended lead times.

If the size you require is not shown opposite, please ring – we may be able to suggest an alternative method of supply, ie. sawn plate.



Stainless Steel Square Bar

SPECIFICATION & WESSEX COLOUR CODE

		YELLOW	GREEN	RED	RED + YELLOW
SIZE					
INCH	MM	303	304	316	321*
1/8		7		7	
3/16		7	7	7	
	5	2	2		
	6	2	7	2	
1/4		2	2	1	7
	7	2	2		
5/16		2	2	1	7
	8	1	2	2	
3/8		2	2	1	7
	10	1	2	2	7
	11	2	2		
	12	1	1	2	
1/2		1	1	1	7
	13	2	2		
	14	2	2		
5/8		2	2	1	7
	16	1	2	2	
	18	2	2		
3/4		2	1	1	7
	20	1	1	1	
	22	2	2		
7/8		2	2	2	7
	25	2	1	1	
1"		1	1	1	7
	30	7	2	7	
1 1/4		2	1	1	7
	32	2	2		
	35	7	2		
1 1/2		7	1	1	7
	40	2	2		
1 3/4		2	2	2	
	45	2	2		
	50	2	1	1	
2		1	1	2	
2 1/4		2	2	7	
2 1/2		2	1	2	
	65		2	2	7
	75		2	2	
3		2	1	2	
3 1/2		2	2	7	
4		2	2	7	
	106		1		

KEY

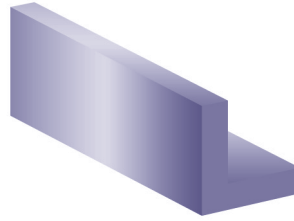
- 1** Normally in stock in Wimborne
- 2** Ex-Sheffield warehouse 2/3 days
- 7** Normally available in 7 days

* Very limited availability of this grade

NOTES

Uncoded items may be available subject to manufacturing quantities and extended lead times.

If the size you require is not shown opposite, please ring – we may be able to suggest an alternative method of supply, ie. precision forged bar.



Stainless Steel Angle

SPECIFICATION TYPES 304 + 316 (LIMITED RANGE OF TYPE 321 AVAILABLE)

SIZE	THICKNESS					
	3mm	5mm	6mm	8mm	10mm	12mm
20 x 20	2					
25 x 25	1	2	2			
30 x 30	2	2	2			
40 x 40	1	2	1			
50 x 50	2	1	1	7	2	
60 x 60			2			
65 x 65		2	2	2	2	
75 x 75			1			
80 x 80			2	2	2	
100 x 100			2	2	2	

KEY

- 1** Normally in stock in Wimborne
- 2** Ex-Sheffield warehouse 2/3 days
- 7** Normally available in 7 days

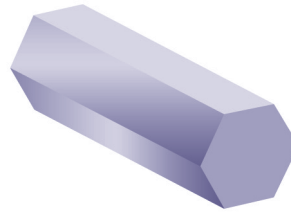
NOTES

Uncoded items may be available subject to manufacturing quantities and extended lead times.

A wide range of extruded unequal angles available from Mainland Europe in 14 days approximately.

Large equal and unequal angles available folded from plate, complete with punched holes if required – typically for use in the construction industry.

Please ring if the size you require is not shown above.



Stainless Steel Hexagon Bar

		SPECIFICATION & WESSEX COLOUR CODE					
		YELLOW	GREEN	RED	RED + YELLOW	RED + YELLOW	RED + PURPLE
INCH	MM	303	304	316	321*	416*	431*
	4						
.187							
.193		7				7	
	5	1					
	5.5	7					7
.218		7					
	6	2					
.248		2		2		7	7
.250		2		7			
	7	2		2			7
.312		2		2			
	8	1		2		7	7
.324		7		7			7
	9	2					
.375		2	7	2			7
	10	1	7	2	7	7	7
	11	2		2			
.437		2	2	2	7	7	7
.445		7		7		7	7
	12	2	7	2			
.500		2	2	2	7	7	7
	13	2		2			7
.525		1	2	2		7	7
	14	2	7	7			
.562		2	7	2	7		7
	15	7					
.600		2	7	2	7		7
.625		1	2	2	7	7	7
	16	7					
	17	1	2	2	7		7
.687		7		7	7		
.710		2	2	2	7		7
	19	2		2			
.750		2	2	2	7	7	7
	20	2		7			
.812				7			
.820		2	2	2			7
	21	7					
	22	2	7	2			
.875		2	2	2	7		7
.920		7	7	7	7		7
.937		2	7	2			7
	24	2	7	2	7		
	25	7		7			

KEY

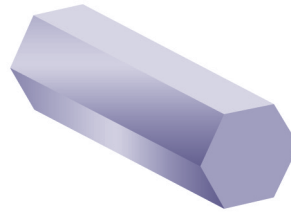
- 1 Normally in stock in Wimborne
- 2 Ex-Sheffield warehouse 2/3 days
- 7 Normally available in 7 days

* Very limited availability of these grades

NOTES

Uncoded items may be available subject to manufacturing quantities and extended lead times.

Continued ►



Stainless Steel Hexagon Bar

SPECIFICATION & WESSEX COLOUR CODE

		YELLOW	GREEN	RED	RED + YELLOW	RED + YELLOW	RED + PURPLE
INCH	SIZE	303	304	316	321*	416*	431*
	MM						
1.000		2		2	7	7	
1.010		2	2	2	7		7
	26	2		7			
1.062		7		7			
	27	2	7	2			
1.100		2	2	2			7
1.125		2	7	2			
	29	7					
	30	2	7	2	7		7
1.200		2	2	2	7		7
1.250		2	2	2	7		
	32	7	7				
1.300		2	2	2	7		7
1.312		7		7			
1.375		2		7			
	36	2	7	2			7
1.437		7	7	7			
1.480		2	2	2	7		
	38	7					
1.500		7	7	7			
	41	7		7			
1.625		7	7	7			
1.670		2	7	2			7
1.750		7		7			
	46	7		7			
1.860		2	7	2			
	50	7					
2.000				7	7		
2.050		2		2			
	55	7		7			
2.220		7		2			
	60	7					
2.500		2	7	2			
2.750				2			

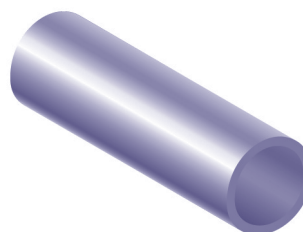
KEY

- 1** Normally in stock in Wimborne
- 2** Ex-Sheffield warehouse 2/3 days
- 7** Normally available in 7 days

* Very limited availability of these grades

NOTES

Uncoded items may be available subject to manufacturing quantities and extended lead times.



Stainless Steel Hollow Bar

NOMINAL SIZE		304	316L	316Ti
OD	ID			
32	16	3	3	14
	20	3	3	14
36	16	3	3	14
	20	3	3	14
40	25	3	3	14
	20	3	3	14
	25	3	3	14
45	28	3	3	14
	20	3	3	14
	28	3	3	14
50	32	3	3	14
	25	3	3	14
	32	3	3	14
56	36	3	3	14
	28	3	3	14
	36	3	3	14
40	3	14	14	
	63	3	3	14
	36	3	3	14
	40	3	3	14
71	50	3	3	14
	36	3	3	14
	45	3	3	14
75	56	3	3	14
	40	3	3	14
	50	14	14	
80	60	14	14	14
	40	3	3	14
	50	3	3	14
85	63	3	3	14
	45	3	3	14
	50	3	3	14
90	56	3	3	14
	63	3	3	14
	71	3	3	14
	50	3	3	14
100	56	3	3	14
	63	3	3	14
	71	3	3	14
	80	3	3	14
106	56	3	3	14
	71	3	3	14
	80	3	3	14
112	63	3	3	14
	71	3	3	14
	80	3	3	14
	90	3	3	14
118	63	3	3	14
	71	14	14	
	80	3	3	14
	90	3	3	14

KEY

3 Normally available in 3/4 days

14 Available from Continental Stock, normally 14 working days

STANDARD TOLERANCE

OUTSIDE DIAMETER

Up to 50mm = +1mm -0

Over 50mm = +2% -0

INSIDE DIAMETER

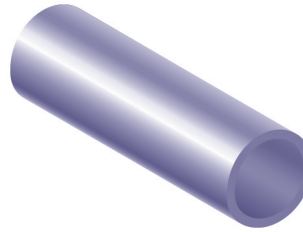
Up to 50mm = -1mm +0

Over 50mm = -2% +0

NOTES

Non standard sizes and grades can be supplied to your requirements - please ring.

Continued ►



Stainless Steel Hollow Bar

NOMINAL SIZE		304	316L	316Ti
OD	ID			
125	71	3	3	14
	90	3	3	14
	100	3	3	14
132	71	3	3	14
	80	14	14	14
	90	3	3	14
140	106	3	3	14
	80	3	3	14
	100	3	3	14
150	112	3	3	14
	80	3	3	14
	95	3	3	
160	106	3	3	14
	125	3	3	14
	112	3	3	14
170	122	3	3	
	132	3	3	14
	106	14		14
180	118	3	3	
	130	14		14
	140	3	3	14
190	125	3	3	14
	130	14	14	14
	140	3	3	
200	150	3	3	14
	123	14		14
	132	3	3	14
212	140	14		14
	150	3	3	14
	160	3	3	14
224	160	3	3	14
	140	3	3	14
	140	14		14
236	180	3	3	14
	150	3	3	14
	190	3	3	14
240	170	14	14	14
250	200	3	3	14

KEY

3 Normally available in 3/4 days

14 Available from Continental Stock, normally 14 working days

STANDARD TOLERANCE

OUTSIDE DIAMETER

Up to 50mm = +1mm -0

Over 50mm = +2% -0

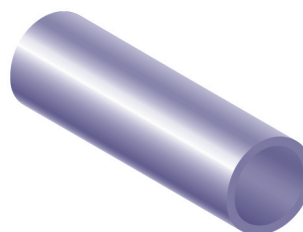
INSIDE DIAMETER

Up to 50mm = -1mm +0

Over 50mm = -2% +0

NOTES

Non standard sizes and grades can be supplied to your requirements - please ring.



Stainless Steel Pipe, Tube & Ornamental Tube

PIPE SIZE		PIPE SCHEDULES											
		WALL THICKNESS IN MM DENOTED BY SCHEDULE NUMBER											
NOMINAL BORE IN INCHES	O/D IN MM	5	10	20	40S	40	80S	80	120	140	160	BSP STDD	XX HEAVY
1/8	10.29		1.24			1.73		2.41					
1/4	13.7	1.24	1.65			2.24		3.02				2.03	
3/8	17.1	1.24	1.65			2.31		3.2					
1/2	21.3	1.65	2.11			2.77		3.73			4.75		7.47
3/4	26.7	1.65	2.11			2.87		3.91			5.54	3.25	7.82
1"	33.4	1.65	2.77			3.38		4.55			6.35	3.65	9.09
1 1/4	42.2	1.65	2.77			3.56		4.85			6.35		
1 1/2	48.3	1.65	2.77			3.68		5.08			7.14		10.16
2"	60.3	1.65	2.77			3.91		5.54			8.71	4.47	11.07
2 1/2	73.0	2.11	3.05			5.16		7.01			9.53		
3"	89.0	2.11	3.05			5.49		7.62			11.13		15.24
3 1/2	101.6	2.11	3.05			5.74		8.80			11.13		
4"	114.3	2.11	3.05			6.02		8.56			13.49		17.12
5"	141.3	2.77	3.4			6.55		9.52			15.88		19.05
6"	168.3	2.77	3.4			7.11		10.97	14.27		18.23		21.95
8"	219.1	2.77	3.76	6.3		8.18		12.7	18.26	20.62	23.01		22.23
10"	273.1	3.4	4.19	6.35		9.28	12.7		21.44	25.4	28.58		
12"	323.9	4.2	4.58	6.35	9.53		12.7	17.48	25.4	28.58	33.32		
14"	355.6		6.35		9.53		12.7	19.05	27.79	31.75	35.71		
16"	406.4		6.35	7.92	9.53	12.7		21.44	30.96	36.53	40.49		
18"	457.2		6.35					23.83	34.93	39.67	45.24		
20"	508.0		6.35		SCH 60	20.63		26.19	38.1	44.45	50.01		
22"	559.0				SCH 60	22.23		28.58	41.28	47.63	53.48		
24"	609.6				SCH 60	24.61		30.96	46.02	52.37	59.54		

NOTES

The above range of sizes would generally be available from either UK or Europe within a matter of days.

Sizes without wall thickness shown possibly available from USA stocks in 4 - 6 weeks.

Full range of fittings ie. elbows, reducers, tees, flanges etc available to suit above pipes.

Stainless steel pipe commonly available in types 304L, 316L, 316Ti and to a lesser extent in types 321 and 310.

In addition to the above a full range of O/D tube is available from <1mm O/D up to >600mm dia. Please ask us for the size you need.

Full range of welded round, square and rectangular tube available either from Wimborne stock or within a few days. Total number of sizes/grades/finishes too great to list - please ring with your enquiry.