

KEY

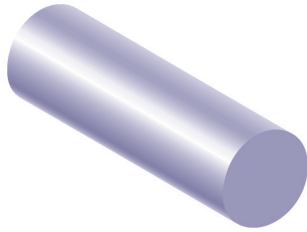
- 1 Normally in stock in Wimborne
- 2 Ex-Sheffield warehouse 2/3 days
- 7 Normally available in 7 days

Uncoded items may be available subject to manufacturing quantities and extended lead times.

Carbon & Alloy Steel Round Bar

BS970 1955	ENIA	ENIAPb	EN3B	EN8D	EN8DM	EN9	EN14	EN16T	EN16MT	EN19T	EN24T	EN32	EN36B	EN40B	
BS970 1996	220M07 230M07	230M07Pb	080A15 070M20	080M40	212A42	070M55	150M19	605M36T	606M36T	708M40T	817M40T	080A15	655M13	722M24	
WESSEX COLOUR CODE	GREEN	MAGENTA	BLUE	RED + WHITE	YELLOW + GREEN	GREEN + BLUE	GREEN + BLACK	RED + BLACK	YELLOW + BLACK	BLACK + WHITE	BLUE + WHITE	BLACK	RED + BLUE	BLACK + RED + WHITE	
SIZE															
INCH	MM														
	3	1		1										1	
1/8		1		2	1									1	
	4	1	1	1										1	
3/16		1	2	1	2										
	5	1	1	1	2	1								1	
7/32		1	7	7										7	
	6	1	1	1	2	1			2	2				1	
1/4		1	1	1	1				2		1			1	
	7	2	2	2	1	1								2	
9/32		2	1	7										7	
5/16		1	1	1	2	2			1				7	1	
	8	1	1	1	2	2								1	
	9	2	2	2	2									2	
3/8		1	2	1	1	2			2	2	2	2	1	1	
	10	1	1	1	2	1			2	2	2	2	1	1	
	11	2	2	2					7					2	
7/16		1	1	1	2	2			2	2	2	2	1	1	
	12	1	1	1	1	1			2	2	2	2	1	1	
1/2		1	1	1	1	2	2		1	2	2	1	1	1	
	13	1	2	2	1									2	
	14	1	2	2	2	7			1					2	
9/16		2	2	1	2	1	7		2	7	2	7	1	1	
	15	1	2	1	2	2								1	
5/8		1	1	1	2	2	2		1	2	2	1	1	2	
	16	1	1	1	2	2	7		2	2		2	1	1	
	17	2	2	2	3	3								2	
11/16		2	1	2	2	2			2	2		7	2	2	
	18	2	2	2	2	7			7	2	7			2	
	19	2	2	2			7							2	7
3/4		1	1	1	1	1	2		2	2	2	1	1	2	
	20	1	2	1	1	2	2		1	2	2	2	1	1	
13/16		2	2	2	2	3							7	2	
	22	2	2	2	2	3			7	7	2	7	2	2	
7/8		1	1	1	1	1	7		1	1	2	1	1	1	
	23	7	7	7		7								7	
5/16			2	2		2	7							7	
	24	2	2	2	2	7			7	7	7	7	2	2	
	25	1	2	1	1	2	7		2	7	2	2	1	1	
1"		1	1	1	1	1	2		2	1	1	1	1	2	2
	26	2	1	2	7	7								2	
1 1/16		2	2	2	7	7	7							2	
	27	2	2	2	7	7								2	

Continued ►



KEY

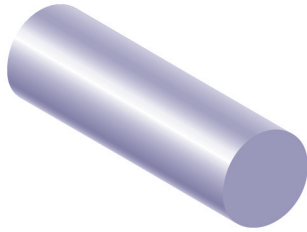
- 1 Normally in stock in Wimborne
- 2 Ex-Sheffield warehouse 2/3 days
- 7 Normally available in 7 days

Uncoded items may be available subject to manufacturing quantities and extended lead times.

Carbon & Alloy Steel Round Bar

BS970 1955	ENIA	ENIAPb	EN3B	EN8D	EN8DM	EN9	EN14	EN16T	EN16MT	EN19T	EN24T	EN32	EN36B	EN40B
BS970 1996	220M07 230M07	230M07Pb	080A15 070M20	080M40	212A42	070M55	150M19	605M36T	606M36T	708M40T	817M40T	080A15	655M13	722M24
WESSEX COLOUR CODE	GREEN	MAGENTA	BLUE	RED + WHITE	YELLOW + GREEN	GREEN + BLUE	GREEN + BLACK	RED + BLACK	YELLOW + BLACK	BLACK + WHITE	BLUE + WHITE	BLACK	RED + BLUE	BLACK + RED + WHITE
SIZE														
INCH	MM													
	28	2	7	2	2	7	7							2
1 1/8		1	2	1	2	2	2		2	2	2	2	1	
	30	1	1	1	1	1	2		2	2	2	1	1	2
1 3/16		2	2	2	2	7							2	
1 1/4		1	1	1	1	2	2		2	2	1	1	1	2
	32	2	2	2	2	2	7	2	7	7	2	2	2	2
1 5/16		2	2	2	2	2							2	
1 3/8		1	2	1	2	1	7		2	2	2	1	1	
	35	1	2	1	2	2	7	2	2	2	2	2	1	2
	36	2	2	2	2	2			7	7	7	2	2	
	38	2	3	3				2					3	2
1 1/2		1	1	1	1	1	2		2	2	1	1	1	2
	40	1	2	1	1	1	2		1	2	2	1	1	2
1 5/8		1	7	1	2	2	7		1	1	11	1	1	
	42	2	2	2	2	2	7		2	7	7	2	2	2
1 3/4		1	2	1	1	2	2		2	2	2	2	1	7
	45	2	2	1	2	2	2	2	1	2	7	2	1	2
1 7/8		1	2	1	2	2			2	2	2	1	1	7
	50	1	2	1	2	2	2	2	2	2	2	2	1	2
2"		1	2	1	1	2	2		1	2	1	1	1	7
2 1/8		2	1	1	2	1			2	2	2	2	1	
	55	2	2	1	2	1	2		2		2	2	1	7
2 1/4		1	1	1	1	2	7		1	2	2	1	1	7
	60	1	2	1	1	2	2		2	2	1	1	1	2
2 3/8		2	2	2	2	2							2	7
2 1/2		1	2	1	1	2	7		2	2	2	1	1	7
	65	1	2	1	2	2	2	2	7	7	2	1	1	2
2 5/8		2	2	2	2	2							2	
2 3/4		1	2	1	1	1			2	2	2	1	1	7
	70	1	2	1	2	2	2	2	2	2	2	2	1	2
2 7/8		2	1	2	2								2	
	75	1	2	2	1	7	2	2	2		2	2	1	2
3"		1	1	1	1	2			1	2	2	1	1	7
3 1/8		2	2	2	7	7							2	
	80	1	2	1	2	2	2	2	2	7	1	1	1	2
3 1/4		1	1	1	1	2			7				1	
	85	2	7	2	2	7	2	2	2		2	2	2	2
3 3/8		2	2	2									2	
3 1/2		1	2	1	1	1			7	7			1	
	90	2	2	1	2	2	2	2	2		2	2	1	2
3 5/8		1												2
	95	2		2	2	7	2	2	2		2	2	2	2

Continued ►



KEY

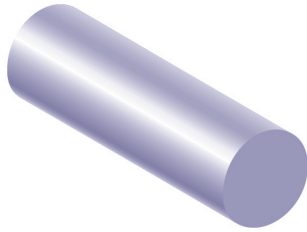
- 1 Normally in stock in Wimborne
- 2 Ex-Sheffield warehouse 2/3 days
- 7 Normally available in 7 days

Uncoded items may be available subject to manufacturing quantities and extended lead times.

Carbon & Alloy Steel Round Bar

BS970 1955		ENIA	ENIAPb	EN3B	EN8D	EN8DM	EN9	EN14	EN16T	EN16MT	EN19T	EN24T	EN32	EN36B	EN40B
BS970 1996		220M07 230M07	230M07Pb	080A15 070M20	080M40	212A42	070M55	150M19	605M36T	606M36T	708M40T	817M40T	080A15	655M13	722M24
WESSEX COLOUR CODE		GREEN	MAGENTA	BLUE	RED + WHITE	YELLOW + GREEN	GREEN + BLUE	GREEN + BLACK	RED + BLACK	YELLOW + BLACK	BLACK + WHITE	BLUE + WHITE	BLACK	RED + BLUE	BLACK + RED + WHITE
SIZE															
INCH	MM														
3¾		1	7	1	2	7	7		7				1		
	100	1	2	1	2	1	2	2	2		2	1	1	2	7
4"		1	2	1	1	7	2		7	7			1		
	105	2		2	2		2	2	2		2	1	2	2	2
4¼		1	7	1	2								1		
	110	2		2	2		2	2	2		2	2	2	2	2
4½		1	7	1	2								1		
	115	2		1	7		2	2	2		2	1	1	2	2
	120	2		2	2		2	2	2		2	1	2	2	2
4¾		1	7	1	2								1		
	125	2		2	2		2		2		2	2	2		
5"		1	7	1	1								1		
	130	2		1	2		2	2	2		2	1	1	2	2
5¼		1	7	2	2								2		
	135	2		2	2		2		2		2	2	2	2	2
5½		1	7	1	2								1		
	140	2		2	2		2	2	2		2	2	2	2	2
	145	2		1	2		2		2		2	1	1	2	2
5¾		1	7	1	2								1		
	150	2		2	1		2	2	2		2	1	2	2	2
6"		1	7	1	1								1		
	155	2		2	7		2	2	2		2	2	2	2	2
6¼		2	7	2	2								2		
	160	2		2	1		2	2	2		2	1	2	1	2
	165	2		2	2		2		2		2	2	2	2	
6½		1	7	1	2								1		
	170	2		2	2		2	2	2		2	2	2	2	2
6¾		2	7	2	2								2		
	175	2		2	2		2					2	2	2	
7"		1	7	1									1		
	180	2		2	2		2	2	2		2	2	2	2	2
7¼		7	7	7	7								7		
	185	2		2	1		2				2	2	2	2	
	190	2		2	2		2	2	2		2	2	2	2	2
7½		1	7	1	2								1		
	200	2		2	2		2	2	2		2	2	2	1	2
8"		1	7	1	2								1		
8¼		7		2	7								2		
	210	2		1	2		1	1	1		2	2	1	2	
	215			2	7							2	2	2	
8½		2	7	1	2								1		
	220	2		2	2		2	2	2		2	2	2	2	

Continued ►



KEY

- 1 Normally in stock in Wimborne
- 2 Ex-Sheffield warehouse 2/3 days
- 7 Normally available in 7 days

Uncoded items may be available subject to manufacturing quantities and extended lead times.

Carbon & Alloy Steel Round Bar

BS970 1955	ENIA	ENIAPb	EN3B	EN8D	EN8DM	EN9	EN14	EN16T	EN16MT	EN19T	EN24T	EN32	EN36B	EN40B
BS970 1996	220M07 230M07	230M07Pb	080A15 070M20	080M40	212A42	070M55	150M19	605M36T	606M36T	708M40T	817M40T	080A15	655M13	722M24
WESSEX COLOUR CODE	GREEN	MAGENTA	BLUE	RED + WHITE	YELLOW + GREEN	GREEN + BLUE	GREEN + BLACK	RED + BLACK	YELLOW + BLACK	BLACK + WHITE	BLUE + WHITE	BLACK	RED + BLUE	BLACK + RED + WHITE
SIZE														
INCH	MM													
8¾		7		7	7									7
9"		2	7	1	2									1
	230	2		2	2	2	2	2		2	2	2	2	2
9¼		7		7	7									7
	240	2		2	2	2	2	2		2	2	2	2	2
9½		2	7	2	2									2
	250	2		2	2	2		2		2	2	2	2	
10"		1	7	1	2									1
	260	2		2	2	2	2	2		2	2	2	2	2
10½		2	7	2	2									2
	270	2		2	2	2	2				2	2	2	
11"		2	7	2	2									2
	280	2		2	2	2				2	2	2	2	2
	290	2		2	7	2	2				2	2	2	
11½		2	7	2										2
	300	2		2	2	2					2	2		7
12"		2	7	1										1
	305			2	2	2	2			2		2	2	7
	310			2	7							2		7
	320			2	2	2	2			2		2		
	330			2	2	2				2	2	2	2	
	340				7	2								
	350			2	2	2				7		2		7
	360			1	2							1		
	365			2	2	2					2	2	2	
	380			2	2	2				7	2	2		
	390			2	2	2						2		
	400			1	7	2		7		2	2	1	2	7
	420			2	2	2				7	2	2		
	440			2	2	2		7		7	2	2	7	
	460			2	2	2	2			7	2	2	7	7
	490			2	2	2					2	2	7	
	510				7					7				
	520			2	2	2					2	2	7	
	540			2	2	2				7	2	2		
	560			2	2	2				7	2	2	7	7
	570			2	7	2					2		7	
	580			2	2						2	2		
	600			7	2	2				7	2	7	7	7
APPX	700			7	7	7				7	7	7		
APPX	800			7	7					7	7	7		
APPX	900			7	7	7					7	7		

SPECIFICATIONS: 080A15 + 070M20 (SOME SIZES AVAILABLE IN 220M07 + 080M40)

WIDTH (MM)	THICKNESS (MM)															
	3	4	5	6	8	10	12	15	16	20	25	30	40	50	60	75
12	2		2	1	2	2										
16	1		2	2	2	1	2									
20	1	2	1	1	1	1	1	7	2							
25	1	1	1	1	1	1	1	7	1							
30	2		1	1	2	1	1	7	1	1	1					
32	2		7	2	7	7	7		7	7	7					
35			1	7		1	7		7	7	7	7				
40	2		1	1	1	1	1	7	1	1	1	1				
45			7	7	7	7	7		7	7	1	7	7			
50	2		1	1	1	1	1	7	1	1	1	1	1			
60	7		1	2	2	1	1	7	1	1	2	2	1	1		
65				7		7	7		7	7	7	7	7	7		
70				1	2	1	2	7	1	2	2	7	7	7		
75				1	2	2	2	7	2	2	2		7	7		
80			1	2	2	1	1	7	2	1	1	2	2	1		
90				1		1	2		2	1	2	7	7	7		
100				1	2	1	1	7	1	1	1	2	1	1	7	7
120				7	7	7	7	7		7		7	7		7	
125				1	2	1	1	7	2	1	1	2	2	2		
140				7	7	7	7	7		7						
150				2	2	1	1	7	2	1	1	2	2	7		7
160				7	7	7	7		7	7	7	7	7	7		
200				2	2	2	1	7	2	1	1	2	2			
250						2	1	7		7	7	7				
300						7	7	7		7	7	7	7			

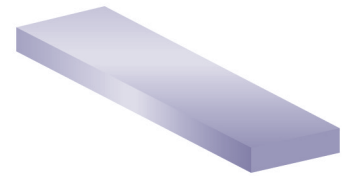
Bright Steel Metric Flat Bar

KEY

- 1 Normally in stock in Wimborne
- 2 Ex-Sheffield warehouse 2/3 days
- 7 Normally available in 7 days

NOTES

Uncoded items may be available subject to manufacturing quantities and extended lead times.



SPECIFICATIONS: 080A15 + 070M20 (SOME SIZES AVAILABLE IN 220M07 + 080M40)

WIDTH (INCHES)	THICKNESS (INCHES)															
	1/16	1/8	3/16	1/4	5/16	3/8	1/2	5/8	3/4	7/8	1"	1 1/4	1 1/2	2"	2 1/2	3"
1/4		1														
3/8		1	1	2	2											
1/2		1	1	2	1	1	1									
5/8		2	2	2	1	2	1	1								
3/4		1	1	2	1	2	1	1	1							
7/8			1	2	2	7	2	2	7	1						
1"	2	1	1	1	2	1	1	1	1	7						
1 1/8		7	7					7	7							
1 1/4		2	1	1	2	2	1	2	1	7	1					
1 3/8						7	7				7					
1 1/2	1	1	1	1	1	1	1	1	7	1	2					
1 3/4	1	2	2	7	1	2	7	2	7	2	7	7				
2"	1	1	1	2	1	1	1	1	1	1	2	1				
2 1/4		7	1	7	7	7	7		7	7	7					
2 1/2	2	1	1	2	1	1	2	1		1	2	1	2			
2 3/4			7		7	7		7		7	7					
3"	2	2	1	2	1	1	2	1	7	1	2	1	1	2		
3 1/2	7	7	2		2	2	7	2	7	2	7	2	2	7		
4"	2	2	1	2	1	1	1	1	7	1	1	1	1	1	2	
4 1/2			7		7	2	7	7		2						
5"		7	1	7	1	1	1	1		1	7	2	2	7	2	
6"		7	1	2	1	1	1	1		1	2	2	2	7	2	
7"			7		7	1		7		1						
8"			1	1	1	1	2	1		1	7	2	2			
10"			2		2	1	7	2		2		2				
12"			7		2	2	7	2		2		2				

Bright Steel Metric Flat Bar

KEY

- 1 Normally in stock in Wimborne
- 2 Ex-Sheffield warehouse 2/3 days
- 7 Normally available in 7 days

NOTES

Uncoded items may be available subject to manufacturing quantities and extended lead times.

Bright Steel Square Bar

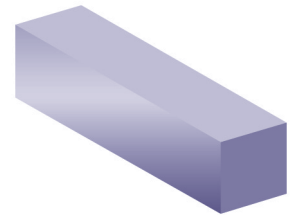
		SPECIFICATION					
		ENIA	ENIAPb	EN3B	KEY STEEL	EN8	EN32
SIZE		230M07	230M07Pb	070M20	-	080M40	080A15
INCH	MM						
1/2					2		
	4			1	1		1
3/16		2	7		2		
	5				2		
	6	1		1	2		1
1/4		2	7	1	2		1
	7				7		
5/16		2	7	1	2		1
	8	2		1	2		1
3/8		2	7	1	2		1
	10	2		1	2		1
7/16		2	7		2		
	12	2		1	2		1
1/2		1	7	1	2	1	1
	14	2			7		
	15	2					
5/8		2	7	1	2		1
	16	2		2	7		2
	18	2	1		7		
3/4		2	7	1	2	2	1
	20	2		1	2		1
	22	2			7		
7/8		1		1	2		1
	25	2		1	2		1
1"		2	2	1	2	2	1
1 1/8		2			7		
	30	2		1			1
1 1/4		2	2	1	2	2	1
	32	2		2			2
1 3/8		2		2	7		2
	35	2	2	2			2
1 1/2		2		1	2	2	1
	40	2		1			1
1 3/4		1		1	7		1
	45	2		2			2
	50	1		1			1
2"		2		1	7	2	1
	55						
2 1/4		2		2			2
	60	2		1			1
2 1/2		2		2		2	2
	65						
2 3/4				2			2
	70	2		2			2
	75	1		1			1
3"				1		7	1
	80						
3 1/4				2			2
3 1/2				2			2
	100			1			1
4"				2			2
4 1/2				2			2
5"				2			2
5 1/2				7			7
6"				2			2

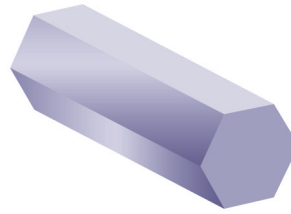
KEY

- 1 Normally in stock in Wimborne
- 2 Ex-Sheffield warehouse 2/3 days
- 7 Normally available in 7 days

NOTES

Uncoded items may be available subject to manufacturing quantities and extended lead times.





Carbon and Alloy Steel Hexagon Bar

BS970 1955		ENIA	ENIAPB	EN8M	EN16T
BS970 1996		220M07 230M07	230M07PB	212A42	605M36
SIZE					
INCH	MM				
0.193			2		
	5		2		
0.218			2		
	6		1		
0.218		2	2		
	7		2		
0.312		2	2		
	8	2	2		
0.324		2	2		
0.375		2	2		
	10	2	1		
	11		2		
0.437		2	2		2
0.445		2	2		
	12	2	2		
0.500			2	2	2
	13	2	2		
0.525		2		1	
	14		2	1	
0.562		2	2	7	
0.600		2	2		
0.625		2	2	7	
	16	2	2		
	17	2	2	1	
0.687		2	1	7	
	18	2	2		
0.710		2	2		
	19	7	2	7	
0.750		2	2	2	2
	20	7			
0.812		2	2	1	
0.820		2	2		
	22	1	2	7	7
0.875		2	2	7	2
0.920		2	2		
0.937		2	2	7	7
	24	2	2		7
	25	7	7		
1.000		2	2	2	2
1.010		2	2	7	7
1.062		2	2	7	7
	27	2	2	2	
1.100		2	2	7	1
1.125		2	1	7	
	30	2	2	7	
1.200		2	1		

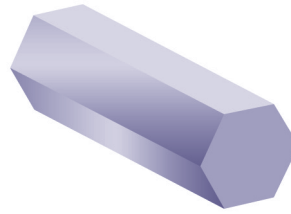
KEY

- 1** Normally in stock in Wimborne
- 2** Ex-Sheffield warehouse 2/3 days
- 7** Normally available in 7 days

NOTES

Uncoded items may be available subject to manufacturing quantities and extended lead times.

Continued ►



Carbon and Alloy Steel Hexagon Bar

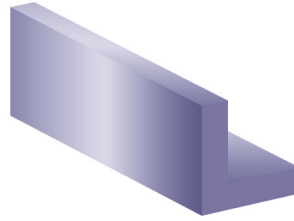
BS970 1955		ENIA	ENIAPB	EN8M	EN16T
BS970 1996		220M07 230M07	230M07PB	212A42	605M36
SIZE					
INCH	MM				
1.250		2	2	7	2
	32	7	2	7	7
1.300		2		7	
1.312		2	2	7	
1.375			2		
1.480		2		7	7
1.500		2	2	7	
	41	7	2	7	
1.670		2		7	
	46	7	2	7	7
1.860		2		7	
	48		2		
	50	7	2	7	
2.050		2		7	
	55		2	7	
2.220		2		7	
	60		2	7	7
2.410					
	65		2	7	
2.580		2			
2.760		2	2	7	
	80	2			
3.150		2			
3.550		2			

KEY

- 1** Normally in stock in Wimborne
- 2** Ex-Sheffield warehouse 2/3 days
- 7** Normally available in 7 days

NOTES

Uncoded items may be available subject to manufacturing quantities and extended lead times.



Bright Steel Angle

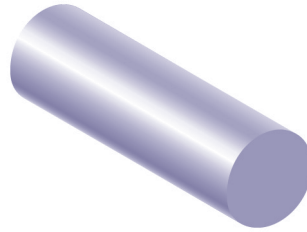
SIZE	THICKNESS (MM)			
	3	4	5	6
16 x 16	2			
20 x 20	2	7		
25 x 25	1		2	
30 x 30	2	1	2	
32 x 32		2	2	2
40 x 40	2	2	1	2
50 x 50				1

KEY

- 1** Normally in stock in Wimborne
- 2** Ex-Sheffield warehouse 2/3 days
- 7** Normally available in 7 days

NOTES

Non standard and some unequal sizes available from continental stock subject to minimum quantities.



Tool Steel Round

SIZE	SPEC + COLOUR		
	01 RED	D2 YELLOW	D3 PINK
13			1
16	1	2	
19.5	2	1	
26	1	1	2
32	1	1	2
41	1		2
42		2	
45	2	1	2
51	1	1	2
60	2	1	
61		1	
65	1	1	2
67	7	1	
76	1	1	2
90	1		
91		1	2
102	1		
105	2	1	2
116	1	2	2
280	1		

KEY

- 1** Normally in stock in Wimborne
- 2** Ex-Sheffield warehouse 2/3 days
- 7** Normally available in 7 days

NOTES

Full range of ground flat stock available from Sheffield warehouse in 2/3 days.

Tool steel flat bar available from Sheffield warehouse in 3/4 days.

Tool steel cut plate available in 5/7 days.

Silver steel rounds available in 24/48 hours.