

## Aluminium Alloy

Table of commonly available grades

ALLOY DESIGNATION			FORMS NORMALLY AVAILABLE
BS + INTNL GRADE NO.	OLD BS	GERMAN WERKSTOFF NO.	
1080A	1A	3.0285	Strip, wire + some sheet
1050A	1B	3.0255	Sheet + strip
1200	1C	3.0205	Sheet, strip + some plate + rod
2011	FC1	3.1655	Round bar, hexagon bar
2014A	H15	3.1255	Sheet, plate, round bar + some extrusion
3103	N3	3.0515	Sheet + some welded tube
5005	N41	–	Anodising quality sheet
5083	N8	3.3547	Sheet, plate, bars + some extrusions + tubes
5251	N4	3.3525	Sheet, strip + some bar
5454	N51	3.3537	Light plare for tipper bodies etc.
5754	–	3.3535	Treadplate
6061	H20	3.3211	Limited range of bars + extrusions
6063	H9	–	Lightweight architectural extrusions, tubes + mouldings
6082	H30	3.2315	Sheet, plate, full range of bars, extrusions + tubes
6262	–	–	Free machining, anodising quality round bars + some hexagons
7010	–	–	Limited availability in plate form
7020	H17	3.4335	Limited availability in plate form
7075	–	3.4365	Plate + some round bars

### NOTES

There are many other less common grades with limited availability – please ask if the grade you require is not shown.

## Aluminium Alloy Round and Square Bar

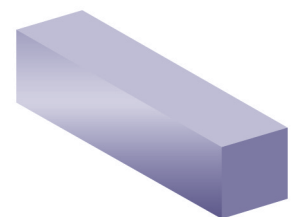
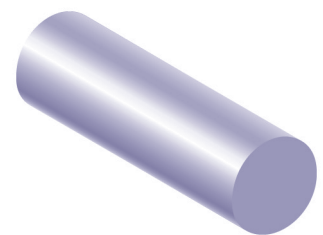
SIZE		ROUNDS & SPECIFICATION						SQUARES & SPECIFICATION
		HE30 6082	HE15 2014A	FC1 2011	7075	NE8 5083	HE9 6063	HE30 6082
INCH	MM							
	3	7						
	4	7						
3/16				7			7	
	5	7		7				
	6			7				
1/4		1	2	2	2		2	2
	7			2				
5/16		1	2	2			7	2
	8	2		2				
3/8		1	2	2			2	2
	10	2		2	10			7
7/16		2	2	2				
	12	2		2	10			7
1/2		1	2	2	2			1
9/16		2		2				
5/8		1	2	2	2			2
	16	2		2	10			
11/16		2		2				
3/4		1	2	2	2	7		2
	20	2		2	10			7
13/16		2		2				
7/8		1	2	2				
15/16				2				
	25	2		2	10			7
1"		1	2	2	2	2		1
1 1/16				2				
1 1/8		1	2	2				
	30	1		7	10			2
1 3/16				2				
1 1/4		1	2	2	2	7		2
1 5/16		7		2				
1 3/8		1	2	2				
1 1/2		1	2	2	2	2		1
	40	2		2	10			7
1 5/8		1	2	2				
1 3/4		1	2	2	2	7		2
	45	2			10			
1 7/8		2	2	2				
	50	2		2	10			
2"		1	2	2	2	2		1
2 1/16				2				
2 1/8		2		2				
2 1/4		1	2	2	2	7		2
	60	2		7	7			7
2 3/8		2	2	2				
2 1/2		1	2	2	2	2		1
	65	2			10			
2 5/8		2		2				
2 3/4		1	2	2		7		
	70	2			10			
2 7/8		7		2				

### KEY

- 1** Normally in stock in Wimborne
- 2** Ex-Sheffield warehouse 2/3 days
- 7** Normally available in 7 days
- 10** Normally available in 10 days

### NOTES

Uncoded items may be available subject to manufacturing quantities and extended lead times.



Continued ►

## Aluminium Alloy Round and Square Bar

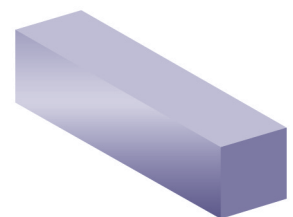
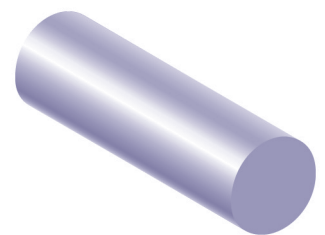
SIZE		ROUNDS & SPECIFICATION						SQUARES & SPECIFICATION
		HE30 6082	HE15 2014A	FC1 2011	7075	NE8 5083	HE9 6063	HE30 6082
INCH	MM							
3"		1	2	1	2	2		1
	80	2			10			
3¼"		1	2	2		7		7
	85	2			10			
3½"		1	2	2	2	2		2
	90	2			10			
	95	2			10			
3¾"		1	2	2	2			
	100	2			2			
4"		1	2	2	2	2		2
4¼"		1	2	2				
4½"		1	2	2	2	2		2
4¾"		1	2	2				
5"		1	2	2	2	2		2
5¼"		2	2	2				
	135	2			10			
5½"		1	2	2	2	2		
5¾"		2	2		7			
	150	2			10			
6"		1	2	2	2	2		2
6¼"		2		2				
6½"		1	2	2				7
6¾"		2		7				
7"		1	2	2		2		7
	185	2			10			
7½"		1	7					
7¾"		2						
	200	2			10			
8"		1	2	2		2		2
8¼"		2						
8½"		1	7					
	225	2			10			
9"		1	2	2		2		
9½"		2						
10"		1	2	2	10	2		
10½"		2						
11"		2			10	7		
11½"		2						
12"		2	2		10	2		
12½"		2						
13"		2			10			
14"		2			10			
15"		2			10			
16"		2			10			
	410	2						
	420	7			10			
	430	7						
	440	7						
	450	7			10			
	480	7						
	500	7			10			
	530	7						

### KEY

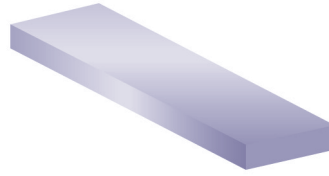
- 1** Normally in stock in Wimborne
- 2** Ex-Sheffield warehouse 2/3 days
- 7** Normally available in 7 days
- 10** Normally available in 10 days

### NOTES

Uncoded items may be available subject to manufacturing quantities and extended lead times.



## Aluminium Alloy Flat Bar Imperial Sizes



BS1474 GRADE 6082T6 (HE30TF) (SOME 6063 IN SMALLER SIZES)

WIDTH (INCH)	THICKNESS (INCHES)															
	1/8	3/16	1/4	5/16	3/8	1/2	5/8	3/4	1"	1 1/4	1 1/2	1 3/4	2"	2 1/2	3"	4"
3/8	7	7														
1/2	2	2	2	7	2											
5/8	2	7	2	7	2	1										
3/4	1	2	2	2	2	1	1									
7/8	7	7	2		2	2										
1"	1	1	1	2	1	1	1	2								
1 1/4	2	2	2	7	2	2	2	2	2							
1 1/2	1	2	1	2	1	1	2	1	1	2						
1 3/4	7	7	2		2	2	2	2	2	7	7					
2"	1	2	1	2	1	2	2	2	2	2	1	2				
2 1/4			2			7			2		2	7	7			
2 1/2	7	7	2	7	2	1	1	2	2	2	2	2	2			
2 3/4			7		7				7							
3"	2	2	1	1	1	1	1	2	1	2	2	2	2	2		
3 1/2			2		2	2	2	1	2	2	2		2	7	7	
4"	7	7	1	2	1	1	1	2	2	2	2	2	2	2	2	
4 1/2			7			7			7			1	2		2	
5"			1		1	1	2	2	2				7	7	7	7
6"	7		1		1	1	7	2	2		7		2		7	7
7"						2	7									

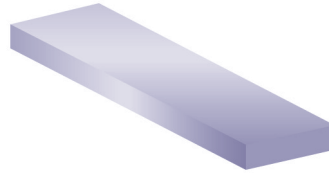
### KEY

- 1 Normally in stock in Wimborne
- 2 Ex-Sheffield warehouse 2/3 days
- 7 Normally available in 7 days

### NOTES

Please ring if the size you require is not shown above, we may be able to suggest an alternative method of supply ie. sawn from plate.

## Aluminium Alloy Flat Bar Metric Sizes



BS1474 GRADE 6082T6 (HE30TF) (SOME 6063 IN SMALLER SIZES)

WIDTH (MM)	THICKNESS (MM)														
	3	5	6	8	10	12	15	20	25	30	40	50	60	70	
10			7												
12			2												
15		2			2										
20	2	2	2	2	2	2	2								
25	2	2	2	2	2		2	2							
30	2	2	2	2	2	2	2	2	2						
40	7	2	2	2	2	2	7	2	2	2					
50		2	2	2	2	2		2	2	2	2				
60		2	2	2	2	2	2	2	2	2	2	2			
70		2			2	2	7	2	7	2		7			
80		2	2	7	2		2	2	2	2	2		2		
100		2	2	2	2	2	2	2	2	2		2	7	7	
120		2			2		2	2	7	2					
150					7		7	2							
200					1			2							
250					2										

### KEY

- 1 Normally in stock in Wimborne
- 2 Ex-Sheffield warehouse 2/3 days
- 7 Normally available in 7 days

### NOTES

Please ring if the size you require is not shown above, we may be able to suggest an alternative method of supply ie. sawn from plate.

# Aluminium Alloy Angles

SIZE		THICKNESS (t)							
A	B	1/16	3mm	1/8	3/16	6mm	1/4	3/8	1/2
3/8	3/8	2							
1/2	1/2	2		2					
5/8	5/8	2		2					
3/4	1/2	5		2					
	3/4		1	2					
<b>20mm</b>	<b>20mm</b>		2						
7/8	7/8			2					
<b>25mm</b>	<b>15mm</b>		5						
	<b>25mm</b>	5	2						
1"	1/2	2		2					
	5/8			5					
	3/4	5		2					
	1"	5		1	2		2		
1 1/8	1 1/8			2					
<b>30mm</b>	<b>30mm</b>		2						
1 1/4	1/2			2					
	3/4			2					
	1"			2					
	1 1/4	2		2	2		2		
1 3/8	1 3/8			2					
1 1/2	1/2			2		2			
	3/4			2					
	1"	5		2	2				
	1 1/2	2		1	2		2		
<b>40mm</b>	<b>40mm</b>		2		5 (5mm)				
1 3/4	3/4			5					
	1"			2					
	1 3/4			2	2		2		
<b>50mm</b>	<b>50mm</b>		5		5 (5mm)				
2"	1/2			2					
	3/4			2					
	1"	5		1	2		2		
	1 1/4			5			5		
	1 1/2			5	2		2		
	2"	5		1	2		1	2	
2 1/4	1 1/4			5					
	2 1/4						5		
<b>60mm</b>	<b>60mm</b>					5			
2 1/4	1"			2					
	1 1/2			2	2		2		
	2"				5		2		
	2 1/2			2	2		2	2	
3"	1"			2			2		
	1 1/2			2	7		2		
	2"			2	2		2	2	
	3"			2	2		2	2	2
<b>80mm</b>	<b>80mm</b>					5			
3 1/2	1 1/2						5		
	3"						5		
	3 1/2						5	5	
<b>100mm</b>	<b>50mm</b>		5			5			
4"	1"			2					
	2"			2			2		
	3"						2	2	
	4"			2			2	2	2
<b>120mm</b>	<b>120mm</b>					5			
5"	2"						5		
	3"						5	5	
6"	2"						2		
	3"						2	2	
	6"						5		2

## KEY

- 1 Normally in stock in Wimborne
- 2 Ex-Sheffield warehouse 2/3 days
- 5 Normally available in 5/7 days

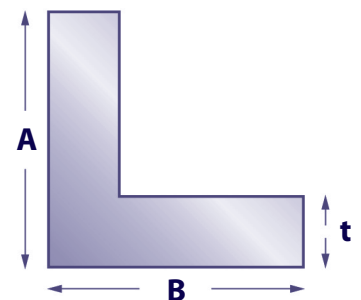
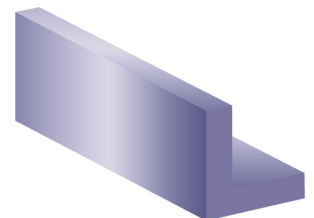
## NOTES

Uncoded items may be available subject to manufacturing quantities and extended lead times.

Dimensional tolerance details available – please ring if required.

Special sizes can be extruded to your exact requirements – normally with a minimum quantity of only 250kgs. If the size you require is not shown please ring.

\* More metric sizes are now available.



## Aluminium Alloy Channel

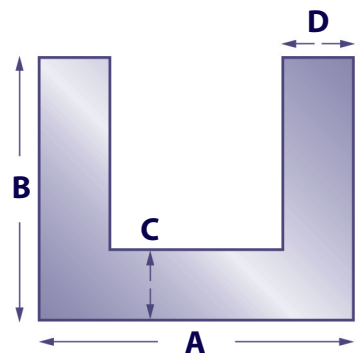
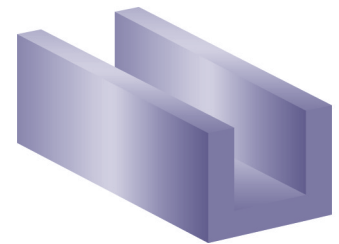
DIMENSIONS			
A	B	C	D
3/8	3/8	1/16	1/16
1/2	1/2	1/16	1/16
1/2	1/2	1/8	1/8
5/8	5/8	1/16	1/16
5/8	5/8	1/8	1/8
3/4	1/2	1/16	1/16
3/4	1/2	1/8	1/8
3/4	3/4	1/16	1/16
3/4	3/4	1/8	1/8
7/8	7/8	1/8	1/8
1"	1/2	1/8	1/8
1"	3/4	1/8	1/8
1"	1"	1/16	1/16
1"	1"	1/8	1/8
1"	1 1/2	1/8	1/8
1"	2"	1/8	1/8
1 1/8	3/4	1/8	1/8
1 1/8	1"	1/8	1/8
1 1/4	1/2	1/8	1/8
1 1/4	3/4	1/8	1/8
1 1/4	1"	1/8	1/8
1 1/4	1 1/4	1/8	1/8
1 1/4	1 1/4	3/16	3/16
1 3/8	1"	1/8	1/8
1 1/2	3/4	1/8	1/8
1 1/2	1"	1/8	1/8
1 1/2	1 1/2	1/8	1/8
1 1/2	1 1/2	3/16	3/16
1 3/4	1"	1/8	1/8
2"	1/2	1/8	1/8
2"	1"	1/8	1/8
2"	1"	3/16	3/16
2"	1"	1/4	1/4
2"	1 1/2	1/8	1/8
2"	1 1/2	3/16	3/16
2"	1 1/2	1/4	1/4
2"	2"	1/8	1/8
2"	2"	1/4	1/4
2 1/4	1 1/4	3/16	3/16
2 1/2	1"	1/8	1/8
2 1/2	1 1/4	3/16	3/16
2 1/2	1 1/2	3/16	3/16
2 1/2	1 1/2	1/4	1/4
3"	1"	1/8	1/8
3"	1 1/2	1/8	1/8
3"	1 1/2	3/16	3/16
3"	1 1/2	1/4	1/4
3"	1 1/2	1/4	5/16
3"	2"	1/8	1/8
3"	2"	1/4	1/4
3 1/2	1 1/2	1/4	5/16
4"	1"	1/8	1/8
4"	2"	1/8	1/8
4"	2"	3/16	3/16
4"	2"	1/4	1/4
4"	2"	1/4	5/16
4"	3"	3/8	3/8
5"	2"	1/4	1/4
5"	2"	1/4	5/16
5"	2 1/2	1/4	3/8
6"	2"	1/4	5/16
6"	3"	1/4	3/8
6"	3"	3/8	1/2
7"	3"	1/4	7/16
8"	3"	3/8	1/2
10"	3"	3/8	1/2

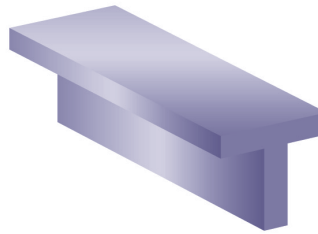
### NOTES

All normally available in 2/3 days.

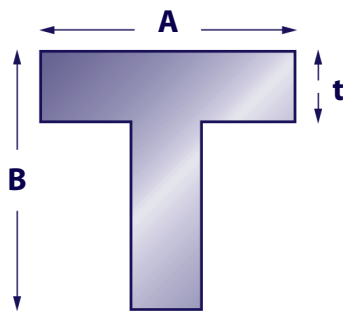
Range of lipped and unlipped road transport channels available – please ring for details.

Special sizes can be extruded to your exact requirements – normally with a minimum quantity of only 250kgs. If the size you require is not shown please ring.

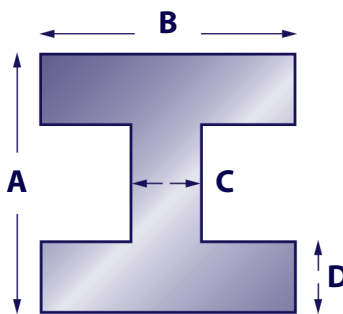




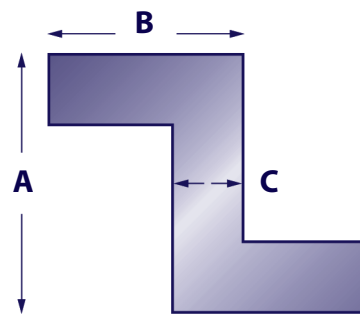
## Aluminium Alloy Tee Section



SIZE		THICKNESS (t)				
A	B	1/16	1/8	3/16	1/4	3/8
1/2	1/2	5				
5/8	5/8	5	5			
3/4	3/4	5	2			
7/8	7/8		5			
1"	1"	5	2			
	2"		2			
1 1/4	1 1/4		2	5	5	
1 1/2	1 1/2		2	5	2	
2"	1"		2	5		
2"	2"		2	5	2	
2 1/2	2 1/2				2	
3"	1 1/2		5			
	3"				2	2
4"	2"				5	
	3"				2	
	4"				2	2



ALUMINIUM ALLOY I BEAM			
DIMENSIONS			
A	B	C	D
3"	1 1/2	3/16	1/4
3"	3"	3/16	1/4
4"	3"	3/16	1/4
4"	3"	1/4	5/16
5"	3"	1/4	3/8
6"	3"	1/4	3/8



ALUMINIUM ALLOY Z SECTION		
DIMENSIONS		
A	B	C
3/4	1/2	1/16
3/4	3/4	1/8
1"	3/4	1/8
1 1/8	3/4	1/8
1 1/4	3/4	1/8
1 1/4	1"	1/8
1 1/2	3/4	1/8
1 3/4	1"	1/8

### KEY

- 1 Normally in stock in Wimborne
- 2 Ex-Sheffield warehouse 2/3 days
- 5 Normally available in 5/7 days

### NOTES

Uncoded items may be available subject to manufacturing quantities and extended lead times.

Dimensional tolerance details available – please ring if required.

Special sizes can be extruded to your exact requirements – normally with a minimum quantity of only 250kgs. If the size you require is not shown please ring.

## Aluminium Alloy I Beam and Z Section

### NOTES

All normally available in 5/7 days.

Other sections such as "J" moulds, cover strips, miscellaneous channels, fluted angles, fluted flats and wallboard sections also available. Please ring for information.

Special sizes can be extruded to your exact requirements – normally with a minimum quantity of only 250kgs. If the size you require is not shown please ring.

## Aluminium Alloy Round Tube

O.D.	WALL SWG
1/4	20
	16
5/16	20
	16
3/8	20
	16
7/16	16
1/2	16
	14
	10
5/8	18
	16
	10
3/4	18
	16
	14
	10
	3/16
	1/4
7/8	16
	14
	10
1"	18
	16
	14
	12
	10
	3/16
	1/4
1 1/8	16
	10
1 1/4	18
	16
	14
	12
	10
	3/16
	1/4
1 3/8	16
	10
1 1/2	16
	14
	10
	3/16
	1/4
1 5/8	16
	10
1 3/4	16
	10
	3/16
	1/4
	3/8
1 7/8	10
1 29/32	7
2"	16
	14
	10
	3/16

O.D.	WALL SWG
2"	1/4
	3/8
	1/2
2 1/4	16
	10
	1/4
	3/8
	1/2
2 1/2	16
	10
	3/16
	1/4
	3/8
	1/2
2 3/4	16
	10
	1/4
	3/8
	1/2
3"	16
	10
	3/16
	1/4
	3/8
	1/2
3 1/4	16
	10
	1/4
	3/8
	1/2
3 1/2	16
	10
	1/4
	3/8
	1/2
	3/4
	1"
3 3/4	16
	10
	1/4
	3/8
	1/2
	3/4
4"	16
	14
	10
	3/16
	1/4
	3/8
	1/2
	3/4
	1"
4 1/4	10
	1/4
4 1/2	10
	1/4
	3/8
	1/2
	3/4
	1"
5"	10
	1/4
	3/8

O.D.	WALL SWG
5"	1/2
	3/4
	1"
5 1/2	1/4
	3/8
	1/2
	3/4
	1"
	1 1/4
6"	10
	1/4
	3/8
	1/2
	3/4
	1"
6 1/2	1/4
	1/2
	3/4
	1"
7"	1/4
	3/8
	1/2
	3/4
	1"
7 1/2	1/4
	1/2
	3/4
	1"
8"	3/8
	1/2
	3/4
	1"
	1 1/2
8 1/2	1/2
	3/4
	1"
9	1/4
	1/2
	3/4
	1"
9 1/2	1/2
	3/4
	1"
10"	1/4
	1/2
	3/4
	1"
10 1/2	1/2
	3/4
	1"
11"	1/2
	3/4
	1"
12"	1/4
	1/2
	1"

### NOTES

All normally available in 3/4 days.

Dimensional tolerance details available. Please ring if required.

Also available as either BS1471 drawn tube or to pipe schedules. Some metric now becoming available. Please ring with your enquiry.

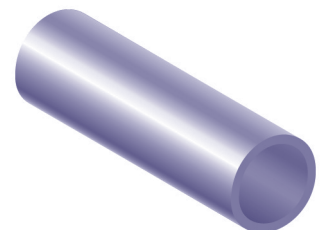
Special sizes can be extruded to your exact requirements – normally with a minimum quantity of only 250kgs. If the size you require is not shown please ring.

Range of welded tube available (typically for manufacture of garden furniture etc).

\* Metric sizes are now available

TABLE OF GAUGES

SWG	INCHES	MM
24	.022	0.56
22	.028	0.71
20	.036	0.91
18	.048	1.22
16	.064	1.625
14	.080	2.03
12	.104	2.64
10	.128	3.25





## Aluminium Alloy Square and Rectangular Tube

DIMENSIONS		
A	B	t
1/2"	1/2"	16g
5/8"	5/8"	16g
3/4"	3/4"	16g
3/4"	3/4"	10g
<b>25mm</b>	<b>25mm</b>	<b>3mm</b>
1"	1/2"	18g
1"	1"	16g
1"	1"	10g
<b>30mm</b>	<b>30mm</b>	<b>3mm</b>
1 1/4"	1 1/4"	16g
1 1/4"	1 1/4"	10g
1 1/2"	3/4"	16g
1 1/2"	3/4"	10g
1 1/2"	1"	16g
1 1/2"	1"	10g
1 1/2"	1 1/2"	16g
1 1/2"	1 1/2"	10g
<b>40mm</b>	<b>40mm</b>	<b>2mm</b>
<b>40mm</b>	<b>40mm</b>	<b>3mm</b>
1 3/4"	1 3/4"	16g
1 3/4"	1 3/4"	10g
<b>50mm</b>	<b>50mm</b>	<b>2mm</b>
2"	1"	16g
2"	1"	10g
2"	1 1/2"	10g
2"	2"	16g
2"	2"	10g
2"	2"	3/16"
2"	2"	1/4"
<b>60mm</b>	<b>60mm</b>	<b>3mm</b>
<b>60mm</b>	<b>60mm</b>	<b>4mm</b>
2 1/2"	1"	10g
2 1/2"	1 1/2"	10g
2 1/2"	2 1/2"	10g
2 1/2"	2 1/2"	3/16"
3"	1"	10g
3"	1 1/2"	10g
3"	1 3/4"	10g
3"	2"	10g
3"	2"	1/4"
3"	3"	10g
3"	3"	3/16"
3"	3"	1/4"
3 1/2"	3 1/2"	10g
<b>100mm</b>	<b>50mm</b>	<b>3mm</b>
<b>100mm</b>	<b>100mm</b>	<b>3mm</b>
4"	1"	10g
4"	1 3/4"	10g
4"	2"	10g
4"	2"	1/4"
4"	3"	10g
4"	4"	10g
4"	4"	1/4"
5"	2"	1/4"
<b>150mm</b>	<b>150mm</b>	<b>4mm</b>
6"	1 3/4"	10g
6"	2"	10g
6"	2"	1/4"

### NOTES

All normally available in 3/4 days.

Special sizes can be extruded to your exact requirements – normally with a minimum quantity of only 250kgs. If the size you require is not shown please ring.

Some larger sizes now available.

\* More metric sizes are now available.

