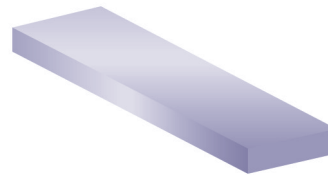


Tolerance Table for Stainless Steel Round Bar

DIAMETER		TOLERANCE TO ISO							
MM	INCH	H8		H9		H10		K12	
		MM	INCH	MM	INCH	MM	INCH	MM	INCH
+3 - 6	0.199 - 0.236	.018	.00071	.03	.00118	.048	.00189	.120	.0047
+6 - 10	0.237 - 0.394	.022	.00087	.036	.0014	.058	.00228	.150	.0059
+10 - 18	0.395 - 0.708	.027	.0011	.043	.0071	.070	.00276	.180	.0071
+18 - 30	0.709 - 1.180	.033	.0013	.052	.0020	.084	.00331	.210	.0083
+30 - 50	1.181 - 1.970	.039	.0015	.062	.0024	.100	.00394	.250	.0098
+50 - 80	1.971 - 3.150	.046	.0018	.074	.0029	.120	.00472	.300	.0118
+80 - 120	3.151 - 4.720	.054	.0021	.087	.0034	.140	.00551	.350	.0138
+120 - 180	4.724 - 7.09	.063	.0025	.100	.0039	.160	.00630	.400	.0158
+180 - 250	7.10 - 9.84	.072	.0028	.115	.0045	.185	.00728	.460	.0181
+250 - 250	7.10 - 9.84	.081	.0032	.130	.0051	.210	.00827	.520	.0205

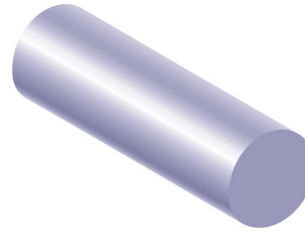


Tolerances for Stainless Steel Slit, Edge Rolled Flat Bar

A) LENGTH	+50mm -0
B) WIDTH	+0.5mm -0.5mm
C) THICKNESS	+7% -5%
D) STRAIGHTNESS	Widths from 12mm - <40 = length in mm x 0.004 Widths from 40mm to 150 = length in mm x 0.0025
E) FLATNESS	Widths from 12mm - <40 = length in mm x 0.01 Widths from 40mm to 150 = length in mm x 0.0075
F) TWIST	Permissible rotation deviation from flatness of <1 x thickness

TOLERANCE INFORMATION ON OTHER PRODUCTS AVAILABLE ON REQUEST – PLEASE RING.

Tolerance Tables for Bright Steel Round & Flat Bar

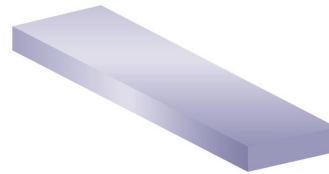


BRIGHT DRAWN ROUND BAR	
SIZE MM	TOLERANCE MM
+6 - 18	+0 -0.07
+18 - 30	+0 -0.085
+30 - 50	+0 -0.10
+50 - 80	+0 -0.12
+80 - 100	+0 -0.14

TO BS970 Pt 3 1991

BRIGHT TURNED ROUND BAR	
SIZE MM	TOLERANCE MM
+6 - 18	+0 -0.07
+18 - 30	+0 -0.085
+30 - 50	+0 -0.10
+50 - 80	+0 -0.12
+80 - 120	+0 -0.14
+120 - 180	+0 -0.16
+180 - 250	+0 -0.185

TO BS970 Pt 3 1991



BRIGHT DRAWN FLAT BAR		
SIZE MM	WIDTH TOLER MM	THICKNESS TOLER MM
<18	+0 -0.11	+0 -0.11
+18 - 30	+0 -0.13	+0 -0.13
+30 - 50	+0 -0.16	+0 -0.25
+50 - 80	+0 -0.19	+0 -0.35
+80 - 100	+0 -0.22	-
+100 - 130	+0 -0.35	-
+130 - 160	+0 -1.00	-
+160 - 320	+1.00 -1.00	-